

ATF 100G-4

100 METRISCHE TONNEN TRAGLAST / 100 METRIC TON CAPACITY

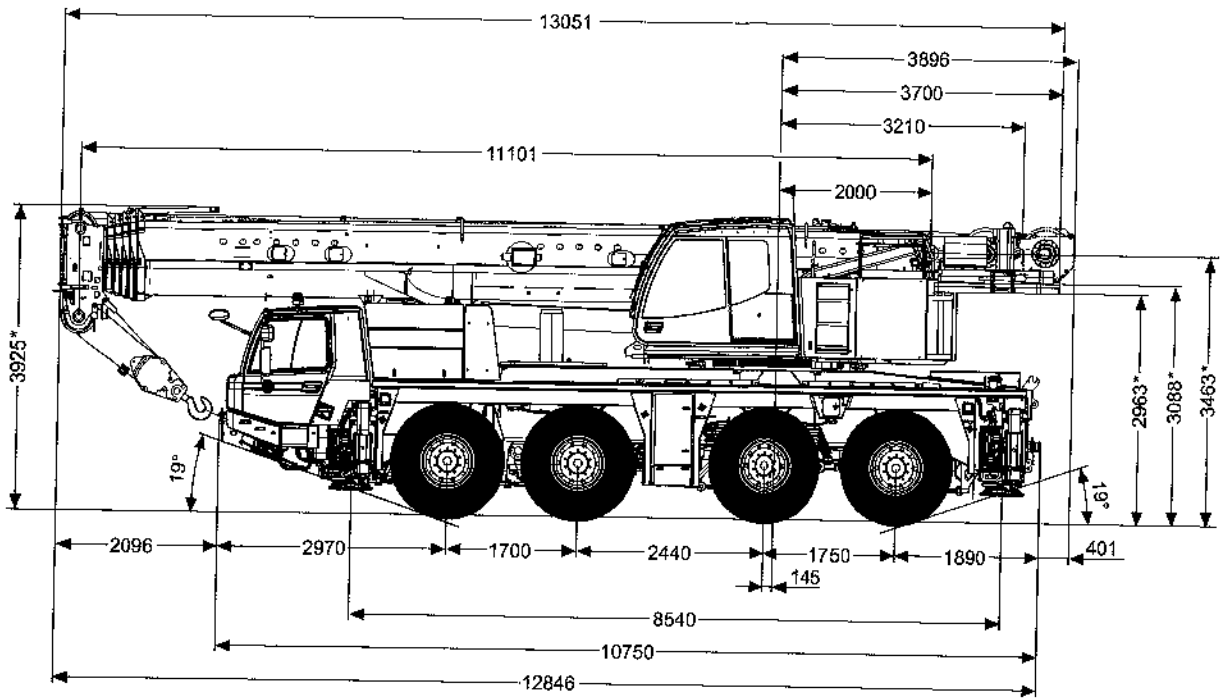
**ALL
TERRAIN
CRANE**



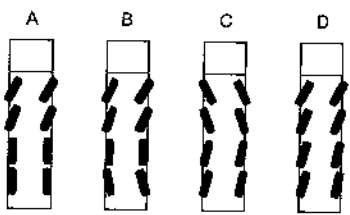
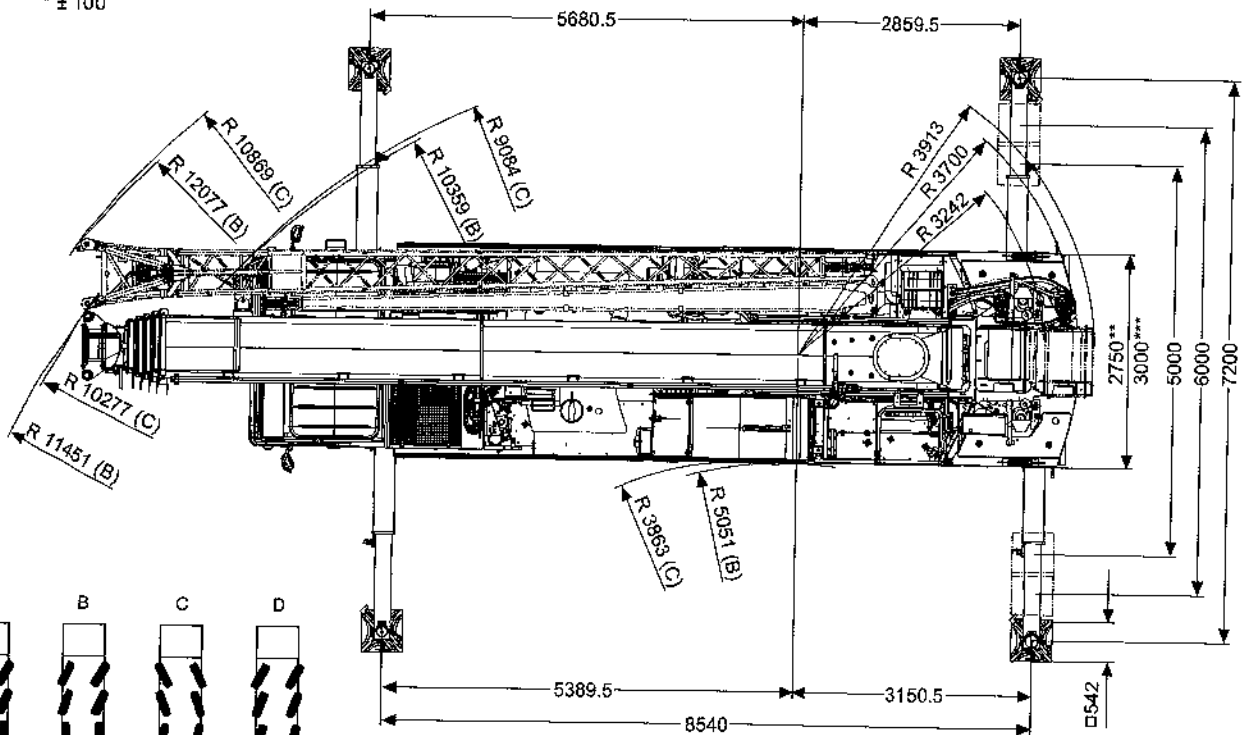
Maße (mm)
 Dimensions (mm)
 Dimensiones (mm)

DIN/ISO/EN

445/95 R 25
 (16.00 R 25)



* ± 100



v > 25 km/h v < 25 km/h

** 385/95 R 25 (14.00 R25), 445/95 R 25 (16.00 R25)
 *** 525/80 R 25 (20.5 R25)

Gewichte / Geschwindigkeiten
Weights / Working speeds
Poids / Vitesses
Pesos / Velocidades de trabajo

	Achse /Axle Essieu / Eje	1	2	3	4	Gesamtgewicht / Total weight Poids total / Peso total
	(t)	12	12	12	12	48 ^{1) 2)}

¹⁾ Incl. 6,0 t Gegengewicht, 10 m / 18 m Auslegerverlängerung, Unterflasche, Hakengeschirr, Bereifung 445/95 R 25 (16.00 R 25).

²⁾ Incl. 6,0 t counterweight, 10 m / 18 m boom extension, hook block, swivel hook, tyres 445/95 R 25 (16.00 R 25).

¹⁾ Incl. de 6,0 t contrepoids, 10 m / 18 m fléchette, moufle, élingues, pneus 445/95 R 25 (16.00 R 25).

²⁾ Incl. contrapeso de 6,0 t, 10 m / 18 m plumin, gancho, gancho de bola, neumáticos 445/95 R 25 (16.00 R 25).

¹⁾ Incl. 7,6 t Gegengewicht, Unterflasche, Hakengeschirr, Bereifung 445/95 R 25 (16.00 R 25).

²⁾ Incl. 7,6 t counterweight, hook block, swivel hook, tyres 445/95 R 25 (16.00 R 25).

¹⁾ Incl. de 7,6 t contrepoids, moufle, élingues, pneus 445/95 R 25 (16.00 R 25).

²⁾ Incl. contrapeso de 7,6 t, gancho, gancho de bola, neumáticos 445/95 R 25 (16.00 R 25).

	Traglast / Lifting capacity / Force de levage / Capacidad de elevación	Rollen / Sheaves Pulies / Poleas	Stränge / Parts of line Brins / Ramales de cable	Gewicht / Weight Poid / Peso
	59.1 t (Typ / Type / Typo 63)*	5	11	650 kg
	38.1 t (Typ / Type / Typo 40)*	3	7	550 kg
	38.1 t (Typ / Type / Typo 40)	3	7	550 kg
	16.5 t (Typ / Type / Typo 20)	1	3	300 kg
	5.6 t (Typ / Type / Typo 6)	–	1	150 kg



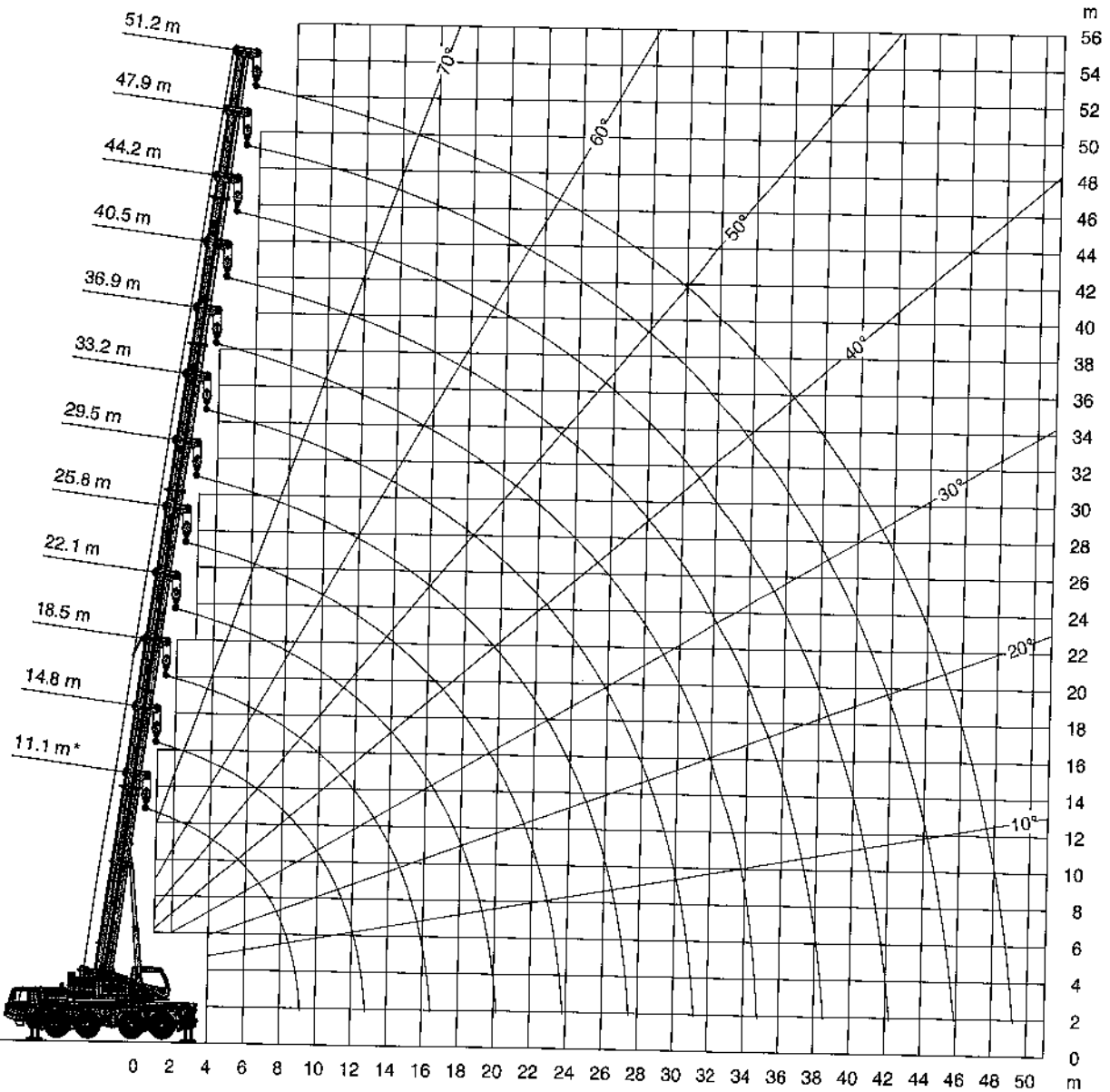
		1	2	3	4	5	6	7	8	9	10	11	12	R1	R2	
	385/95 R 25 (14.00 R 25)	3	4	5	6	8	10	13	17	22	28	36	46	3	4	74%
km/h		5	7	9	12	15	19	25	32	41	52	67	85	6	8	
	445/95 R 25 (16.00 R 25)	3	4	5	7	9	11	15	19	24	31	39	50	3	4	65%
km/h		6	8	10	13	16	20	27	34	44	57	72	85	6	8	

V+	Stufenlos Infinitely variable Progressivement variable Infinitamente variable	Seil Rope Câble Cable	Max. Seilzug Max. single line pull Effort maxi au brin simple Trio máximo por ramal
	0 - 115 m/min für einfachen Strang single line au brin simple ramal simple	18 mm / 230 m	55 kN
	0 - 115 m/min für einfachen Strang single line au brin simple ramal simple	18 mm / 230 m	55 kN
	0 - 2 min ⁻¹		0° + 180°
	- 1° – + 82.4° ca. 30 s approx. 30 s env. 30 s aproximadamente 30 s		
	11.1 m – 51.2 m ca. 310 s approx. 310 s env. 310 s aproximadamente 310 s		



Hubhöhen
Lifting heights
Hauteurs de levage
Alturas de elevación





DIN/ISO/EN



Tragfähigkeiten
Lifting capacities
Capacités de levage
Capacidades de elevación




  22.5t														DIN/ISO/EN	
→ m	11.1 m*	11.1 m	14.8 m	18.5 m	22.1 m	25.8 m	29.5 m	33.2 m	36.9 m	40.5 m	44.2 m	47.9 m	51.2 m		
2.3	100.0														
2.5	90.0														
3.0	81.6	76.1	65.0	65.0											
3.5	74.6	69.9	65.0	65.0	50.0										
4.0	68.3	64.1	63.5	61.4	50.0	41.3									
4.5	62.7	59.0	58.5	56.7	50.0	41.3									
5.0	57.8	54.6	54.0	52.7	50.0	39.2	31.6								
6.0	50.0	47.2	46.6	46.8	45.9	34.9	31.6	23.8							
7.0	42.5	41.2	40.7	40.8	40.8	33.0	28.9	23.8	19.7	15.8					
8.0	36.6	35.5	35.4	35.5	35.8	31.1	28.5	23.8	19.7	15.8	12.9				
9.0	24.9	24.0	31.2	31.4	31.6	29.4	28.5	22.6	19.7	15.8	12.9	10.2			
10.0			26.7	26.9	27.3	28.0	27.0	20.9	19.6	15.8	12.9	10.2	8.9		
11.0			22.7	23.4	24.7	24.9	24.0	19.4	18.2	15.8	12.9	10.2	8.9		
12.0			20.0	21.9	21.9	21.7	21.3	18.0	17.0	15.8	12.9	10.2	8.9		
14.0				17.2	17.3	17.0	16.6	16.2	14.9	14.1	12.9	10.2	8.9		
16.0				14.0	14.1	13.8	13.4	13.9	13.0	12.6	11.8	10.2	8.9		
18.0					11.7	11.5	11.1	11.5	11.7	10.8	10.8	10.0	8.9		
20.0					9.2	9.7	9.3	9.7	9.9	9.5	9.5	9.1	8.5		
22.0						8.3	8.4	8.3	8.5	8.6	8.4	8.1	7.6		
24.0							7.8	7.2	7.7	7.4	7.3	7.0	6.9		
26.0							6.9	6.5	6.7	6.5	6.3	6.0	6.0		
28.0								6.0	5.9	5.7	5.5	5.2	5.2		
30.0								5.3	5.2	5.0	4.8	4.5	4.5		
32.0									4.7	4.4	4.3	3.9	3.9		
34.0									4.2	3.9	3.7	3.4	3.4		
36.0										3.5	3.3	3.0	3.0		
38.0										3.1	2.9	2.6	2.6		
40.0											2.6	2.2	2.2		
42.0											2.3	1.9	1.9		
44.0												1.7	1.6		
46.0													1.4		
48.0													1.2		

* Nach hinten / * Over rear / * A l'arrière / * Sobre la parte trasera



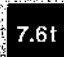
  16.3t														DIN/ISO/EN	
→ m	11.1 m*	11.1 m	14.8 m	18.5 m	22.1 m	25.8 m	29.5 m	33.2 m	36.9 m	40.5 m	44.2 m	47.9 m	51.2 m		
2.3	100.0														
2.5	90.0														
3.0	81.6	76.3	65.0	65.0											
3.5	74.0	69.4	65.0	65.0	50.0										
4.0	67.5	63.5	63.0	61.4	50.0	41.3									
4.5	61.9	58.3	57.8	56.7	50.0	41.3									
5.0	57.1	53.8	53.3	52.7	50.0	39.2	31.6								
6.0	47.9	46.4	45.9	46.0	45.9	34.9	31.6	23.8							
7.0	40.4	39.7	39.2	39.3	38.5	33.0	28.9	23.8	19.7	15.8					
8.0	34.5	34.6	33.6	33.3	32.0	31.1	28.5	23.8	19.7	15.8	12.9				
9.0	24.9	24.0	27.1	27.3	28.1	28.0	26.4	22.6	19.7	15.8	12.9	10.2			
10.0			22.4	24.7	25.0	24.4	23.1	20.9	19.6	15.8	12.9	10.2	8.9		
11.0			20.8	21.4	21.4	21.2	20.4	19.2	18.2	15.8	12.9	10.2	8.9		
12.0			18.1	18.6	18.6	18.4	18.0	17.8	16.6	15.8	12.9	10.2	8.9		
14.0				14.5	14.6	14.3	13.9	14.4	14.0	13.3	12.9	10.2	8.9		
16.0				11.7	11.9	11.5	11.2	11.6	11.8	11.1	11.0	10.2	8.9		
18.0					10.2	9.7	10.1	9.5	9.9	9.8	9.7	9.4	8.9		
20.0					8.6	8.6	8.7	8.4	8.5	8.3	8.1	7.8	7.8		
22.0						7.4	7.5	7.3	7.3	7.0	6.9	6.6	6.5		
24.0							6.5	6.3	6.3	6.0	5.9	5.5	5.5		
26.0							5.7	5.5	5.4	5.2	5.0	4.7	4.7		
28.0								4.8	4.7	4.4	4.3	4.0	4.0		
30.0								4.2	4.1	3.8	3.7	3.4	3.4		
32.0									3.6	3.3	3.2	2.9	2.8		
34.0									3.2	2.9	2.7	2.4	2.4		
36.0										2.5	2.3	2.0	2.0		
38.0										2.2	2.0	1.7	1.7		
40.0											1.7	1.4	1.4		
42.0											1.4	1.1	1.1		
44.0											1.4	1.1	1.1		
46.0												0.9	0.8		
48.0													0.6		

* Nach hinten / * Over rear / * A l'arrière / * Sobre la parte trasera

Tragfähigkeiten
Lifting capacities
Capacités de levage
Capacidades de elevación




  													DIN/ISO/EN	
→ m	11.1 m*	11.1 m	14.8 m	18.5 m	22.1 m	25.8 m	29.5 m	33.2 m	36.9 m	40.5 m	44.2 m	47.9 m	51.2 m	
2.3	100.0													
2.5	90.0													
3.0	81.0	75.7	65.0	65.0										
3.5	73.2	68.8	65.0	65.0	50.0									
4.0	66.7	62.7	62.3	61.4	50.0	41.3								
4.5	61.2	57.6	57.1	56.7	50.0	41.3								
5.0	55.5	53.1	52.6	52.2	50.0	39.2	31.6							
6.0	45.5	44.7	44.2	42.3	40.0	34.9	31.6	23.8						
7.0	37.0	37.1	35.7	33.6	32.2	32.5	28.9	23.8	19.7	15.8				
8.0	28.7	28.7	27.7	27.9	29.0	27.3	25.6	23.8	19.7	15.8	12.9			
9.0	23.1	23.1	23.4	24.9	24.8	23.4	22.0	20.8	19.7	15.8	12.9	10.2		
10.0			20.2	20.8	20.8	20.4	19.2	19.0	17.3	15.8	12.9	10.2	8.9	
11.0			17.2	17.7	17.8	17.5	16.9	16.8	16.1	14.9	12.9	10.2	8.9	
12.0			14.8	15.3	15.4	15.1	14.7	15.0	14.8	13.3	12.9	10.2	8.9	
14.0				11.9	12.4	12.0	12.5	11.7	12.0	11.9	11.0	10.2	8.9	
16.0				9.5	10.0	10.0	10.1	10.0	9.9	9.6	9.4	8.8	8.6	
18.0					8.1	8.2	8.3	8.1	8.1	7.8	7.6	7.3	7.2	
20.0					6.8	6.8	6.9	6.7	6.7	6.4	6.3	5.9	5.9	
22.0						5.7	5.8	5.8	5.6	5.3	5.2	4.8	4.8	
24.0							4.9	4.8	4.7	4.4	4.3	4.0	4.0	
26.0							4.2	4.0	4.0	3.7	3.6	3.3	3.2	
28.0								3.5	3.4	3.1	3.0	2.7	2.6	
30.0								3.0	2.9	2.6	2.5	2.2	2.1	
32.0									2.5	2.2	2.0	1.7	1.7	
34.0									2.1	1.8	1.7	1.4	1.3	
36.0										1.5	1.3	1.0	1.0	
38.0										1.2	1.1	0.7	0.7	
40.0											0.8	0.5	0.5	
42.0											0.6			

* Nach hinten / * Over rear / * A l'arrière / * Sobre la parte trasera




  													DIN/ISO/EN	
→ m	11.1 m*	11.1 m	14.8 m	18.5 m	22.1 m	25.8 m	29.5 m	33.2 m	36.9 m	40.5 m	44.2 m	47.9 m	51.2 m	
2.3	100.0													
2.5	90.0													
3.0	80.6	75.4	65.0	65.0										
3.5	72.8	68.5	65.0	65.0	50.0									
4.0	66.3	62.4	61.9	61.4	50.0	41.3								
4.5	60.8	57.2	56.7	56.4	50.0	41.3								
5.0	54.2	52.5	51.9	50.2	47.9	39.2	31.6							
6.0	44.4	44.0	41.7	38.9	36.8	34.2	31.6	23.8						
7.0	33.9	34.0	32.8	30.8	31.8	30.0	27.9	23.8	19.7	15.8				
8.0	26.2	26.2	25.2	27.9	26.7	25.1	23.5	21.9	19.7	15.8	12.9			
9.0	21.0	21.0	22.2	22.8	22.8	21.5	20.2	19.9	18.1	15.8	12.9	10.2		
10.0			18.4	19.0	19.0	18.7	17.5	17.4	16.1	15.3	12.9	10.2	8.9	
11.0			15.6	16.2	16.2	15.9	15.4	15.4	15.1	13.5	12.9	10.2	8.9	
12.0			13.4	13.9	14.5	13.7	14.2	13.7	13.5	12.9	11.8	10.2	8.9	
14.0				10.7	11.2	11.2	11.3	11.2	11.2	10.7	10.2	9.5	8.9	
16.0				8.4	8.9	8.9	9.0	8.8	8.8	8.5	8.4	7.8	7.6	
18.0					7.2	7.2	7.3	7.2	7.1	6.8	6.7	6.3	6.3	
20.0					5.9	5.9	6.0	5.9	5.8	5.6	5.4	5.1	5.1	
22.0						4.9	5.0	4.9	4.8	4.6	4.4	4.1	4.1	
24.0							4.2	4.1	4.0	3.8	3.6	3.3	3.3	
26.0							3.6	3.4	3.4	3.1	3.0	2.6	2.6	
28.0								2.9	2.8	2.6	2.4	2.1	2.1	
30.0								2.4	2.4	2.1	1.9	1.6	1.6	
32.0									2.0	1.7	1.6	1.2	1.2	
34.0									1.6	1.4	1.2	0.9	0.9	
36.0										1.1	0.9	0.6	0.6	
38.0										0.8	0.6			

* Nach hinten / * Over rear / * A l'arrière / * Sobre la parte trasera

Tragfähigkeiten
Lifting capacities
Capacités de levage
Capacidades de elevación





   6.0t		DIN/ISO/EN											
→ m	11.1 m*	11.1 m	14.8 m	18.5 m	22.1 m	25.8 m	29.5 m	33.2 m	36.9 m	40.5 m	44.2 m	47.9 m	51.2 m
2.3	100.0												
2.5	90.0												
3.0	80.3	75.3	65.0	65.0									
3.5	72.6	68.2	65.0	65.0									
4.0	66.1	62.2	61.7	61.4	50.0								
4.5	59.9	57.0	56.5	56.1	50.0	41.3							
5.0	53.5	52.0	51.4	48.8	45.4	41.3							
6.0	43.8	43.5	39.5	36.7	34.8	34.2	31.6						
7.0	32.0	32.0	30.9	29.9	30.3	28.4	30.8	23.8					
8.0	24.6	24.6	25.1	26.5	25.3	23.8	26.4	23.8	19.7	15.8			
9.0	19.7	19.7	20.9	21.5	21.6	20.4	22.2	20.9	19.7	15.8	12.9		
10.0			17.3	17.9	18.0	17.7	16.5	17.0	17.0	15.8	12.9	10.2	
11.0			14.8	15.2	15.5	15.0	15.2	16.4	16.1	14.3	12.9	10.2	8.9
12.0			12.5	13.0	13.6	13.6	13.8	14.4	14.2	12.9	12.3	10.2	8.9
14.0				9.9	10.4	10.4	10.5	13.1	13.0	12.3	11.0	10.2	8.9
16.0				7.7	8.2	8.2	8.3	10.4	10.3	9.9	9.4	8.7	8.5
18.0					6.6	6.6	6.7	8.2	8.1	7.8	7.7	7.1	6.9
20.0					5.4	5.4	5.5	6.6	6.5	6.2	6.1	5.8	5.7
22.0						4.5	4.6	5.4	5.3	5.0	4.9	4.6	4.5
24.0							4.6	4.4	4.4	4.1	4.0	3.6	3.6
26.0							3.8	3.7	3.6	3.3	3.2	2.9	2.9
28.0								3.2	3.1	3.0	2.7	2.6	2.3
30.0									2.5	2.5	2.2	2.1	1.7
32.0									2.1	2.0	1.8	1.6	1.3
34.0										1.7	1.4	1.3	0.9
36.0										1.4	1.1	0.9	0.6
38.0										0.8	0.6	0.6	0.6

* Nach hinten / * Over rear / * A l'arrière / * Sobre la parte trasera

   5.1t		DIN/ISO/EN											
→ m	11.1 m*	11.1 m	14.8 m	18.5 m	22.1 m	25.8 m	29.5 m	33.2 m	36.9 m	40.5 m	44.2 m	47.9 m	51.2 m
2.3	100.0												
2.5	90.0												
3.0	80.2	75.2	65.0	65.0									
3.5	72.4	68.1	65.0	65.0									
4.0	66.0	62.1	61.6	61.2	50.0								
4.5	59.4	56.9	56.4	54.7	50.0	41.3							
5.0	53.1	51.7	51.1	47.3	44.0	41.3							
6.0	42.9	42.9	38.2	35.6	34.1	33.8	31.6						
7.0	30.9	30.9	29.9	29.9	29.4	27.5	29.8	23.8					
8.0	23.8	23.8	25.1	25.7	24.5	23.0	25.6	23.8	19.7	15.8			
9.0	19.0	19.0	20.2	20.8	20.9	19.7	21.5	20.9	19.1	15.8	12.9		
10.0			16.7	17.3	17.3	17.1	16.3	18.2	16.3	15.8	12.9	10.2	
11.0			14.1	14.6	15.3	14.6	15.2	15.8	15.5	13.7	12.9	10.2	8.9
12.0			11.9	12.5	13.1	13.1	13.3	14.0	14.0	12.9	11.8	10.2	8.9
14.0				9.4	9.9	10.0	10.1	13.0	12.5	11.8	11.0	10.2	8.9
16.0				7.3	7.8	7.8	7.9	9.9	9.9	9.5	9.0	8.3	8.1
18.0					6.3	6.3	6.4	7.8	7.7	7.5	7.3	6.8	6.6
20.0					5.1	5.1	5.2	6.2	6.2	5.9	5.8	5.4	5.4
22.0						4.2	4.3	5.1	5.0	4.7	4.6	4.3	4.3
24.0							3.6	4.2	4.1	3.8	3.7	3.4	3.4
26.0								3.4	3.4	3.1	3.0	2.6	2.6
28.0								2.8	2.8	2.5	2.4	2.1	2.0
30.0								2.4	2.3	2.0	1.9	1.6	1.5
32.0								1.9	1.9	1.6	1.4	1.1	1.1
34.0									1.5	1.2	1.1	0.8	0.8
36.0									1.2	0.9	0.8	0.5	0.5
38.0										0.7	0.5	0.5	0.5

* Nach hinten / * Over rear / * A l'arrière / * Sobre la parte trasera

Tragfähigkeiten
Lifting capacities
Capacités de levage
Capacidades de elevación

    DIN/ISO/EN													
→ m	11.1 m*	11.1 m	14.8 m	18.5 m	22.1 m	25.8 m	29.5 m	33.2 m	36.9 m	40.5 m	44.2 m	47.9 m	51.2 m
2.3	100.0												
2.5	90.0												
3.0	79.4	74.4	65.0	65.0									
3.5	71.7	67.3	65.0	65.0	50.0								
4.0	64.4	61.3	60.7	54.7	50.0	41.3							
4.5	56.7	55.1	51.0	44.6	42.3	37.9							
5.0	48.8	48.8	42.2	38.6	36.0	34.2	31.0						
6.0	35.4	35.4	31.0	32.0	30.0	27.8	25.6	23.5					
7.0	26.3	26.4	26.5	25.5	24.1	22.5	20.9	20.2	17.8	15.8			
8.0	20.1	20.1	21.4	20.9	19.8	18.5	18.7	17.2	16.1	14.2			
9.0	16.0	15.9	17.1	17.3	17.2	16.4	15.8	15.0	14.3	12.9	12.9		
10.0			13.9	14.5	14.6	14.1	13.6	12.9	12.3	11.5	11.7	10.2	
11.0			11.4	12.1	12.7	12.2	11.9	11.3	10.8	10.1	10.9	10.1	8.9
12.0			9.6	10.2	10.8	10.7	10.5	9.9	9.5	9.5	9.5	8.7	8.5
14.0				7.5	8.0	8.1	8.2	7.8	7.5	8.9	8.3	7.7	7.4
16.0				5.7	6.2	6.3	6.4	6.2	6.1	7.0	6.5	5.9	5.8
18.0					4.9	4.9	5.0	4.9	4.9	5.6	5.2	4.7	4.5
20.0					4.0	4.0	4.0	4.0	3.9	4.5	4.2	3.7	3.6
22.0						3.2	3.3	3.1	3.1	3.6	3.3	2.9	2.8
24.0							2.6	2.5	2.4	2.8	2.7	2.2	2.1
26.0							2.2	2.0	1.9	2.2	2.0	1.7	1.6
28.0								1.6	1.5	1.7	1.5	1.2	1.2
30.0								1.2	1.1	1.2	1.1	0.8	0.8
32.0									0.8	0.9	0.7		
34.0									0.6	0.6			

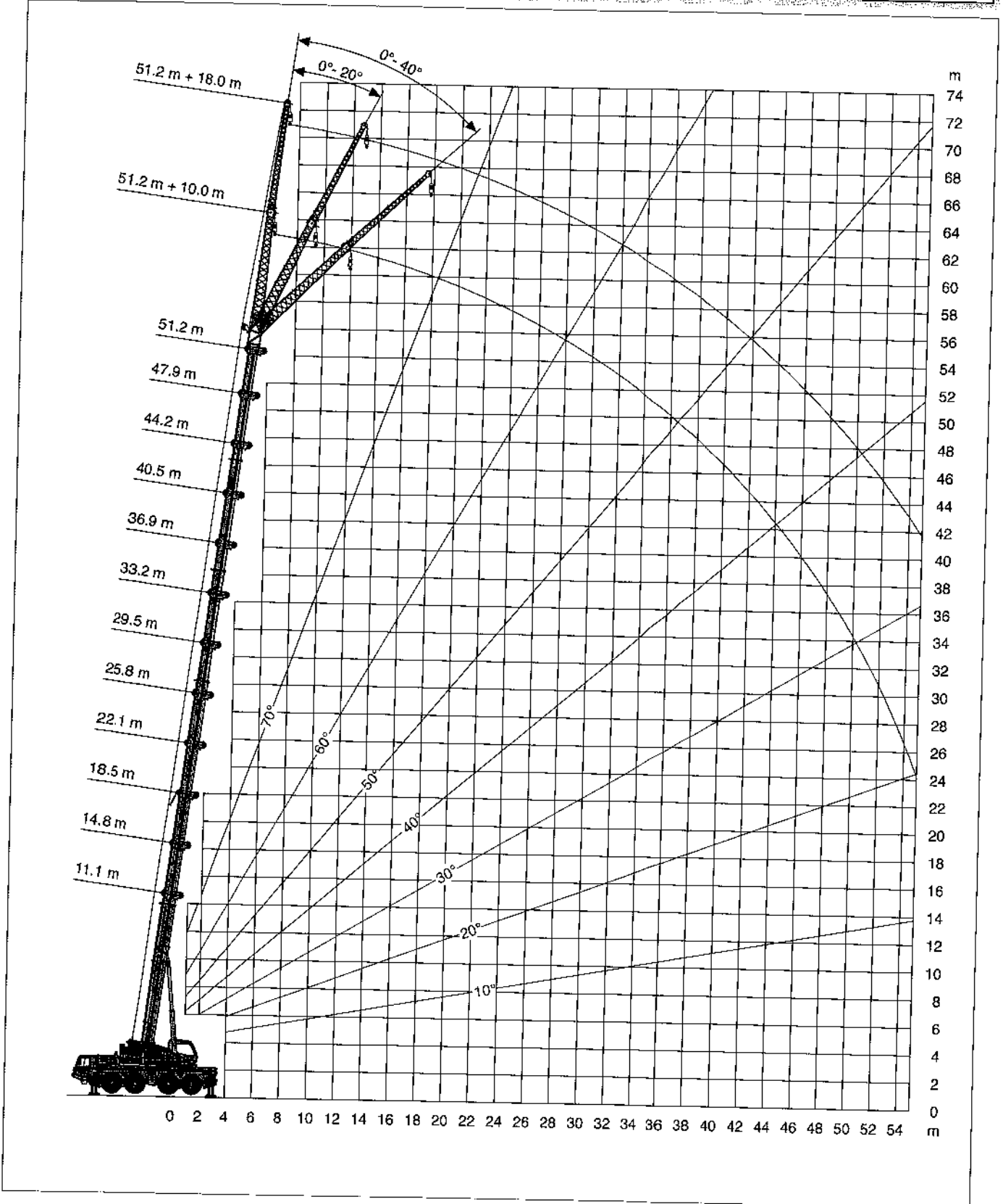
* Nach hinten / * Over rear / * A l'arrière / * Sobre la parte trasera



Hubhöhen
Lifting heights
Hauteurs de levage
Alturas de elevación



DIN/ISO/EN



Tragfähigkeiten
Lifting capacities
Capacités de levage
Capacidades de elevación



m	11.1 m + 10.0 m			33.2 m + 10.0 m			47.9 m + 10.0 m			51.2 m + 10.0 m		
	0°	20°	40°	0°	20°	40°	0°	20°	40°	0°	20°	40°
3.0	12.2											
3.5	12.2											
4.0	12.2											
4.5	12.2											
5.0	12.2	12.2										
6.0	12.2	11.5										
7.0	12.2	10.8										
8.0	12.2	10.2	7.4	10.1								
9.0	12.1	9.7	7.1	10.1								
10.0	11.3	9.0	6.7	10.1	9.0							
11.0	10.5	8.5	6.4	10.1	8.6							
12.0	9.6	8.0	6.2	10.1	8.3		4.9					
14.0	8.1	7.1	5.8	9.3	7.6	6.7	4.9					
16.0	7.0	6.5		8.5	7.1	6.3	4.9			4.4		
18.0				7.9	6.7	6.0	4.9	4.9		4.4	4.4	
20.0				7.4	6.3	5.7	4.9	4.8	4.7	4.4	4.4	
22.0				6.9	6.0	5.5	4.9	4.8	4.5	4.4	4.4	4.2
24.0				6.5	5.7	5.2	4.7	4.6	4.3	4.4	4.3	4.0
26.0				5.6	5.5	5.1	4.5	4.4	4.1	4.4	4.1	3.9
28.0				4.8	5.2	4.9	4.3	4.0	3.9	4.1	3.9	3.7
30.0				4.2	4.4	4.6	4.0	3.9	3.8	3.9	3.8	3.6
32.0				3.6	3.8	4.0	3.7	3.7	3.6	3.7	3.6	3.5
34.0				3.1	3.3	4.0	3.2	3.5	3.5	3.5	3.4	3.3
36.0				2.7	2.8		2.8	3.0	3.4	3.2	3.3	3.2
38.0				2.3	2.4		2.8	3.0	3.2	2.7	3.0	3.1
40.0				2.0			2.4	2.6	2.8	2.3	2.6	2.7
42.0							2.0	2.2	2.4	2.0	2.2	2.3
44.0							1.7	1.9	2.0	1.7	1.9	2.0
46.0							1.4	1.6	1.7	1.4	1.6	1.7
48.0							1.2	1.3		1.1	1.3	1.4
50.0							1.0	1.1		0.9	1.0	
52.0							0.7	0.8		0.7	0.8	
							0.6	0.6		0.5	0.6	

m	11.1 m + 18.0 m			33.2 m + 18.0 m			47.9 m + 18.0 m			51.2 m + 18.0 m		
	0°	20°	40°	0°	20°	40°	0°	20°	40°	0°	20°	40°
3.5	5.8											
4.0	5.8											
4.5	5.8											
5.0	5.8											
6.0	5.8											
7.0	5.8											
8.0	5.8											
9.0	5.8			4.2								
10.0	5.8	5.3		4.2								
11.0	5.8	5.0		4.2								
12.0	5.7	4.8		4.2								
14.0	5.1	4.4		4.2			2.9					
16.0	4.7	4.1	3.2	4.2	4.2		2.9			2.7		
18.0	4.2	3.7	3.0	4.2	4.1		2.9			2.7		
20.0	3.7	3.4	2.8	4.2	3.9	3.2	2.9			2.7		
22.0	3.3	3.1	2.6	4.2	3.8	3.1	2.9	2.9		2.7		
24.0	3.0	2.9	2.5	4.2	3.6	3.0	2.9	2.9		2.7	2.7	
26.0	2.7	2.8		4.2	3.5	2.9	2.9	2.9		2.7	2.7	
28.0				4.1	3.4	2.8	2.9	2.9	2.9	2.7	2.7	2.7
30.0				3.9	3.3	2.7	2.9	2.9	2.8	2.7	2.7	2.6
32.0				3.8	3.2	2.6	2.9	2.9	2.7	2.7	2.7	2.6
34.0				3.6	3.1	2.6	2.9	2.7	2.6	2.7	2.6	2.5
36.0				3.2	3.0	2.5	2.9	2.7	2.5	2.7	2.5	2.4
38.0				2.8	2.9	2.5	2.8	2.6	2.4	2.7	2.4	2.3
40.0				2.4	2.7	2.5	2.6	2.5	2.4	2.6	2.3	2.2
42.0				2.1	2.3	2.5	2.3	2.4	2.3	2.2	2.3	2.2
44.0				1.8	2.0		2.0	2.3	2.2	1.9	2.2	2.1
46.0				1.6	1.7		1.7	2.0	2.2	1.6	2.0	2.1
48.0				1.3			1.4	1.7	1.9	1.3	1.7	1.9
50.0							1.2	1.5	1.6	1.1	1.4	1.6
52.0							1.0	1.2	1.4	0.9	1.2	1.3
54.0							0.8	1.0	1.1	0.7	0.9	1.1
56.0							0.6	0.8	1.1	0.5	0.7	0.9
								0.6			0.5	

Tragfähigkeiten
Lifting capacities
Capacités de levage
Capacidades de elevación



m	11.1 m + 10.0 m			33.2 m + 10.0 m			47.9 m + 10.0 m			51.2 m + 10.0 m		
	0°	20°	40°	0°	20°	40°	0°	20°	40°	0°	20°	40°
3.0	12.2											
3.5	12.0											
4.0	12.2											
4.5	12.2											
5.0	12.2	12.2										
6.0	12.2	11.5										
7.0	12.2	10.8		10.1								
8.0	12.2	10.2	7.4	10.1								
9.0	12.1	9.7	7.1	10.1								
10.0	11.3	9.0	6.7	10.1	9.0							
11.0	10.5	8.5	6.4	10.1	8.6							
12.0	9.6	8.0	6.2	10.1	8.3		4.9					
14.0	8.1	7.1	5.8	9.3	7.6	6.7	4.9			4.4		
16.0	7.0	6.5		8.5	7.1	6.3	4.9	4.9		4.4	4.4	
18.0				7.9	6.7	6.0	4.9	4.9	4.7	4.4	4.4	
20.0				7.4	6.3	5.7	4.9	4.8	4.5	4.4	4.4	4.2
22.0				6.1	6.0	5.5	4.9	4.6	4.3	4.4	4.3	4.0
24.0				5.2	5.6	5.2	4.7	4.4	4.1	4.4	4.1	3.9
26.0				4.3	4.7	5.0	4.5	4.2	3.9	4.1	3.9	3.7
28.0				3.6	4.0	4.2	3.8	4.0	3.8	3.7	3.8	3.6
30.0				3.0	3.3	3.5	3.2	3.6	3.6	3.1	3.5	3.5
32.0				2.5	2.8	2.9	2.7	3.0	3.2	2.6	3.0	3.2
34.0				2.1	2.3		2.2	2.5	2.7	2.2	2.5	2.7
36.0				1.7	1.9		1.8	2.1	2.3	1.8	2.1	2.3
38.0				1.4	1.5		1.5	1.7	1.9	1.4	1.7	1.9
40.0				1.1			1.2	1.4	1.5	1.1	1.4	1.5
42.0							0.9	1.1	1.2	0.9	1.1	1.2
44.0							0.7	0.8	0.9	0.6	0.8	0.9
46.0								0.6			0.5	0.6

m	11.1 m + 18.0 m			33.2 m + 18.0 m			47.9 m + 18.0 m			51.2 m + 18.0 m		
	0°	20°	40°	0°	20°	40°	0°	20°	40°	0°	20°	40°
3.5	5.8											
4.0	5.8											
4.5	5.8											
5.0	5.8											
6.0	5.8											
7.0	5.8											
8.0	5.8			4.2								
9.0	5.8			4.2								
10.0	5.8	5.3		4.2								
11.0	5.8	5.0		4.2								
12.0	5.7	4.8		4.2								
14.0	5.1	4.4		4.2			2.9					
16.0	4.7	4.1	3.2	4.2	4.2		2.9			2.7		
18.0	4.2	3.7	3.0	4.2	4.1		2.9			2.7		
20.0	3.7	3.4	2.8	4.2	3.9	3.2	2.9	2.9		2.7		
22.0	3.3	3.1	2.6	4.2	3.8	3.1	2.9	2.9		2.7	2.7	
24.0	3.0	2.9	2.5	4.2	3.6	3.0	2.9	2.9		2.7	2.7	
26.0	2.7	2.8		4.2	3.5	2.9	2.9	2.9	2.9	2.7	2.7	2.7
28.0				4.1	3.4	2.8	2.9	2.9	2.8	2.7	2.7	2.6
30.0				3.6	3.3	2.7	2.9	2.9	2.7	2.7	2.7	2.6
32.0				3.1	3.2	2.6	2.9	2.7	2.6	2.7	2.6	2.5
34.0				2.6	3.1	2.6	2.5	2.7	2.5	2.4	2.5	2.4
36.0				2.2	2.6	2.5	2.1	2.6	2.4	2.0	2.4	2.3
38.0				1.9	2.2	2.5	1.8	2.2	2.4	1.7	2.1	2.2
40.0				1.6	1.9	2.0	1.4	1.9	2.2	1.4	1.8	2.1
42.0				1.3	1.5		1.2	1.5	1.8	1.1	1.5	1.8
44.0				1.0	1.2		0.9	1.3	1.5	0.8	1.2	1.5
46.0				0.8	1.0		0.7	1.0	1.2	0.6	0.9	1.2
48.0				0.6			0.5	0.8	0.9		0.7	0.9
50.0								0.5	0.7		0.5	0.7
52.0									0.5			0.7

Tragfähigkeiten
Lifting capacities
Capacités de levage
Capacidades de elevación



m	11.1 m + 10.0 m			33.2 m + 10.0 m			47.9 m + 10.0 m			51.2 m + 10.0 m		
	0°	20°	40°	0°	20°	40°	0°	20°	40°	0°	20°	40°
3.0	12.2											
3.5	12.2											
4.0	12.2											
4.5	12.2											
5.0	12.2	12.2										
6.0	12.2	11.5										
7.0	12.2	10.8		10.1								
8.0	12.2	10.2	7.4	10.1								
9.0	12.1	9.7	7.1	10.1								
10.0	11.3	9.0	6.7	10.1	9.0							
11.0	10.5	8.5	6.4	10.1	8.6							
12.0	9.6	8.0	6.2	10.1	8.3		4.9			4.4		
14.0	8.1	7.1	5.8	9.3	7.6	6.7	4.9			4.4		
16.0	7.0	6.5		8.5	7.1	6.3	4.9	4.9		4.4	4.4	
18.0				6.9	6.7	6.0	4.9	4.9	4.7	4.4	4.4	
20.0				5.5	6.1	5.7	4.9	4.8	4.5	4.4	4.4	4.2
22.0				4.5	5.0	5.4	4.7	4.6	4.3	4.4	4.3	4.0
24.0				3.6	4.1	4.4	3.8	4.3	4.1	3.7	4.1	3.9
26.0				2.9	3.3	3.6	3.1	3.5	3.9	3.0	3.5	3.7
28.0				2.3	2.7	2.9	2.5	2.9	3.2	2.4	2.8	3.2
30.0				1.8	2.1	2.3	2.0	2.3	2.6	1.9	2.3	2.6
32.0				1.4	1.7	1.8	1.6	1.9	2.1	1.5	1.8	2.1
34.0				1.0	1.2		1.2	1.5	1.7	1.1	1.4	1.6
36.0				0.7	0.9		0.9	1.1	1.3	0.8	1.1	1.3
38.0				0.5	0.6		0.6	0.8	1.0	0.5	0.8	0.9
40.0								0.5	0.7		0.5	0.6

m	11.1 m + 18.0 m			33.2 m + 18.0 m			47.9 m + 18.0 m			51.2 m + 18.0 m		
	0°	20°	40°	0°	20°	40°	0°	20°	40°	0°	20°	40°
3.5	5.8											
4.0	5.8											
4.5	5.8											
5.0	5.8											
6.0	5.8											
7.0	5.8											
8.0	5.8			4.2								
9.0	5.8			4.2								
10.0	5.8	5.3		4.2								
11.0	5.8	5.0		4.2								
12.0	5.7	4.8		4.2			2.9					
14.0	5.1	4.4		4.2			2.9			2.7		
16.0	4.7	4.1	3.2	4.2	4.2		2.9			2.7		
18.0	4.2	3.7	3.0	4.2	4.1		2.9			2.7		
20.0	3.7	3.4	2.8	4.2	3.9	3.2	2.9	2.9		2.7		
22.0	3.3	3.1	2.6	4.2	3.8	3.1	2.9	2.9		2.7	2.7	
24.0	3.0	2.9	2.5	4.2	3.6	3.0	2.9	2.9		2.7	2.7	
26.0	2.7	2.8		3.5	3.5	2.9	2.9	2.9	2.9	2.7	2.7	2.7
28.0				2.9	3.4	2.8	2.8	2.9	2.8	2.7	2.7	2.6
30.0				2.4	3.0	2.7	2.3	2.9	2.7	2.2	2.7	2.6
32.0				1.9	2.5	2.6	1.8	2.4	2.6	1.7	2.4	2.5
34.0				1.6	2.0	2.4	1.4	2.0	2.4	1.4	1.9	2.4
36.0				1.2	1.6	1.9	1.1	1.6	2.0	1.0	1.6	2.0
38.0				0.9	1.3	1.5	0.8	1.3	1.6	0.7	1.2	1.6
40.0				0.7	1.0	1.2	0.6	1.0	1.3	0.5	0.9	1.2
42.0				0.5	0.7			0.7	1.0		0.6	0.9
44.0					0.5			0.5	0.7			0.7
46.0									0.5			

Tragfähigkeiten
Lifting capacities
Capacités de levage
Capacidades de elevación



m	11.1 m + 10.0 m			33.2 m + 10.0 m			47.9 m + 10.0 m			51.2 m + 10.0 m		
	0°	20°	40°	0°	20°	40°	0°	20°	40°	0°	20°	40°
3.0	12.2											
3.5	12.2											
4.0	12.2											
4.5	12.2											
5.0	12.2	12.2										
6.0	12.2	11.5										
7.0	12.2	10.8		10.1								
8.0	12.2	10.2	7.4	10.1								
9.0	12.1	9.7	7.1	10.1								
10.0	11.3	9.0	6.7	10.1	9.0							
11.0	10.5	8.5	6.4	10.1	8.8		4.9					
12.0	9.6	8.0	6.2	10.1	8.3		4.9			4.4		
14.0	8.1	7.1	5.8	9.3	7.6	6.7	4.9			4.4		
16.0	7.0	6.5		7.6	7.1	6.3	4.9	4.9		4.4	4.4	
18.0				5.9	6.6	6.0	4.9	4.9	4.7	4.4	4.4	
20.0				4.7	5.3	5.7	4.8	4.8	4.5	4.4	4.4	4.2
22.0				3.7	4.2	4.6	3.9	4.5	4.3	3.8	4.3	4.0
24.0				2.9	3.4	3.7	3.1	3.6	4.0	3.1	3.6	3.9
26.0				2.3	2.7	3.0	2.5	2.9	3.3	2.4	2.9	3.2
28.0				1.8	2.1	2.3	1.9	2.3	2.6	1.9	2.3	2.6
30.0				1.3	1.6	1.8	1.5	1.8	2.1	1.4	1.8	2.1
32.0				0.9	1.2	1.3	1.1	1.4	1.6	1.0	1.4	1.6
34.0				0.6	0.8		0.7	1.0	1.2	0.7	1.0	1.2
36.0					0.5			0.7	0.9	0.6	0.7	0.8
38.0									0.6			0.5

m	11.1 m + 18.0 m			33.2 m + 18.0 m			47.9 m + 18.0 m			51.2 m + 18.0 m		
	0°	20°	40°	0°	20°	40°	0°	20°	40°	0°	20°	40°
3.5	5.8											
4.0	5.8											
4.5	5.8											
5.0	5.8											
6.0	5.8											
7.0	5.8											
8.0	5.8			4.2								
9.0	5.8			4.2								
10.0	5.8	5.3		4.2								
11.0	5.8	5.0		4.2								
12.0	5.7	4.8		4.2			2.9					
14.0	5.1	4.4		4.2			2.9					
16.0	4.7	4.1	3.2	4.2	4.2		2.9			2.7		
18.0	4.2	3.7	3.0	4.2	4.1		2.9			2.7		
20.0	3.7	3.4	2.8	4.2	3.9	3.2	2.9	2.9		2.7		
22.0	3.3	3.1	2.6	4.2	3.8	3.1	2.9	2.9		2.7		
24.0	3.0	2.9	2.5	3.5	3.6	3.0	2.9	2.9		2.7	2.7	
26.0	2.7	2.8		2.9	3.5	2.9	2.8	2.9	2.9	2.7	2.7	
28.0				2.3	3.0	2.8	2.2	2.9	2.8	2.1	2.7	2.6
30.0				1.9	2.4	2.7	1.8	2.4	2.7	1.7	2.3	2.6
32.0				1.5	2.0	2.4	1.3	1.9	2.4	1.3	1.9	2.4
34.0				1.1	1.6	1.9	1.0	1.5	2.0	0.9	1.5	1.9
36.0				0.8	1.2	1.5	0.7	1.2	1.8	0.6	1.1	1.5
38.0				0.5	0.9	1.1		0.9	1.2		0.8	1.2
40.0					0.6	0.8		0.6	0.9			0.9
42.0									0.6			0.6

Tragfähigkeiten
Lifting capacities
Capacités de levage
Capacidades de elevación



m	11.1 m + 10.0 m			33.2 m + 10.0 m			47.9 m + 10.0 m			51.2 m + 10.0 m		
	0°	20°	40°	0°	20°	40°	0°	20°	40°	0°	20°	40°
3.0	12.2											
3.5	12.2											
4.0	12.2											
4.5	12.2											
5.0	12.2	12.2										
6.0	12.2	11.5										
7.0	12.2	10.8		10.1								
8.0	12.2	10.2	7.4	10.1								
9.0	12.1	9.7	7.1	10.1								
10.0	11.3	9.0	6.7	10.1	9.0							
11.0	10.5	8.5	6.4	10.1	8.6		4.9					
12.0	9.6	8.0	6.2	10.1	8.3		4.9			4.4		
14.0	8.1	7.1	5.8	8.7	7.6	6.7	4.9			4.4		
16.0	7.0	6.5		6.9	7.1	6.3	4.9	4.9		4.4		
18.0				5.4	6.1	6.0	4.9	4.9	4.7	4.4	4.4	
20.0				4.2	4.8	5.3	4.3	4.8	4.5	4.1	4.4	4.2
22.0				3.3	3.8	4.2	3.5	4.0	4.3	3.4	3.9	4.0
24.0				2.5	3.0	3.3	2.7	3.2	3.6	2.7	3.2	3.6
26.0				1.9	2.3	2.6	2.1	2.5	2.9	2.0	2.5	2.9
28.0				1.4	1.8	2.0	1.6	2.0	2.3	1.5	1.9	2.3
30.0				1.0	1.3	1.5	1.2	1.5	1.8	1.1	1.5	1.7
32.0				0.6	0.9	1.0	0.8	1.1	1.3	0.7	1.1	1.3
34.0							0.5	0.7	1.0		0.7	0.9
36.0									0.6			0.6

m	11.1 m + 18.0 m			33.2 m + 18.0 m			47.9 m + 18.0 m			51.2 m + 18.0 m		
	0°	20°	40°	0°	20°	40°	0°	20°	40°	0°	20°	40°
3.5	5.8											
4.0	5.8											
4.5	5.8											
5.0	5.8											
6.0	5.8											
7.0	5.8											
8.0	5.8			4.2								
9.0	5.8			4.2								
10.0	5.8	5.3		4.2								
11.0	5.8	5.0		4.2								
12.0	5.7	4.8		4.2								
14.0	5.1	4.4		4.2			2.9					
16.0	4.7	4.1		4.2			2.9					
18.0	4.2	3.7	3.2	4.2	4.2		2.9					
20.0	3.7	3.4	3.0	4.2	4.1		2.9					
22.0	3.3	3.1	2.8	4.2	3.9	3.2	2.9	2.9				
24.0	3.0	2.9	2.6	3.9	3.8	3.1	2.9	2.9				
26.0	2.7	2.8	2.5	3.1	3.6	3.0	2.9	2.9				
28.0				2.5	3.2	2.9	2.4	2.9	2.9			
30.0				2.0	2.6	2.8	1.9	2.6	2.8	2.7		
32.0				1.5	2.1	2.6	1.4	2.1	2.6	1.8	2.5	2.6
34.0				1.2	1.7	2.1	1.1	1.6	2.1	1.4	2.0	2.6
36.0				0.8	1.3	1.6	0.7	1.3	1.7	1.0	1.6	2.1
38.0				0.6	1.0	1.2		0.9	1.3		1.2	1.7
40.0					0.6	0.9		0.6	1.0		0.9	1.3
									0.7			0.9
												0.6

Tragfähigkeiten
Lifting capacities
Capacités de levage
Capacidades de elevación



m	11.1 m + 10.0 m			33.2 m + 10.0 m			47.9 m + 10.0 m			51.2 m + 10.0 m		
	0°	20°	40°	0°	20°	40°	0°	20°	40°	0°	20°	40°
3.0	12.2											
3.5	12.2											
4.0	12.2											
4.5	12.2											
5.0	12.2	12.2										
6.0	12.2	11.5										
7.0	12.2	10.8		10.1								
8.0	12.2	10.2	7.4	10.1								
9.0	12.1	9.7	7.1	10.1								
10.0	11.3	9.0	6.7	10.1	9.0							
11.0	10.5	8.5	6.4	10.1	8.6		4.9					
12.0	9.6	8.0	6.2	10.1	8.3		4.9			4.4		
14.0	8.1	7.1	5.8	8.2	7.6	6.7	4.9			4.4		
16.0	7.0	6.5		6.5	7.1	6.3	4.9	4.9		4.4	4.4	
18.0				5.0	5.7	6.0	4.9	4.9	4.7	4.4	4.4	
20.0				3.9	4.5	5.0	4.0	4.6	4.5	3.9	4.4	4.2
22.0				3.0	3.5	3.9	3.2	3.8	4.2	3.1	3.6	4.0
24.0				2.3	2.7	3.1	2.5	3.0	3.4	2.4	2.9	3.4
26.0				1.7	2.1	2.4	1.9	2.3	2.7	1.8	2.3	2.7
28.0				1.2	1.6	1.8	1.4	1.8	2.1	1.3	1.7	2.1
30.0				0.8	1.1	1.3	1.0	1.3	1.6	0.9	1.3	1.6
32.0				0.5	0.7	0.9	0.6	0.9	1.2		0.9	1.1
34.0								0.6	0.8			0.8

m	11.1 m + 18.0 m			33.2 m + 18.0 m			47.9 m + 18.0 m			51.2 m + 18.0 m		
	0°	20°	40°	0°	20°	40°	0°	20°	40°	0°	20°	40°
3.5	5.8											
4.0	5.8											
4.5	5.8											
5.0	5.8											
6.0	5.8											
7.0	5.8											
8.0	5.8			4.2								
9.0	5.8			4.2								
10.0	5.8	5.3		4.2								
11.0	5.8	5.0		4.2								
12.0	5.7	4.8		4.2								
14.0	5.1	4.4		4.2			2.9					
16.0	4.7	4.1	3.2	4.2	4.2		2.9			2.7		
18.0	4.2	3.7	3.0	4.2	4.1		2.9			2.7		
20.0	3.7	3.4	2.8	4.2	3.9	3.2	2.9	2.9		2.7		
22.0	3.3	3.1	2.6	3.6	3.8	3.1	2.9	2.9		2.7	2.7	
24.0	3.0	2.9	2.5	2.9	3.6	3.0	2.8	2.9		2.6	2.7	
26.0	2.7	2.8		2.3	3.0	2.9	2.2	2.9	2.9	2.1	2.7	
28.0				1.8	2.4	2.8	1.7	2.4	2.8	1.6	2.3	2.7
30.0				1.4	1.9	2.4	1.3	1.9	2.5	1.2	1.8	2.4
32.0				1.0	1.5	1.9	0.9	1.5	2.0	0.8	1.4	1.9
34.0				0.7	1.1	1.5		1.1	1.5		1.1	1.5
36.0					0.8	1.1		0.8	1.2		0.7	1.1
38.0					0.5	0.8						0.8
40.0									0.6			

Tragfähigkeiten
Lifting capacities
Capacités de levage
Capacidades de elevación



m	11.1 m + 10.0 m			33.2 m + 10.0 m			47.9 m + 10.0 m			51.2 m + 10.0 m		
	0°	20°	40°	0°	20°	40°	0°	20°	40°	0°	20°	40°
3.0	12.2											
3.5	12.2											
4.0	12.2											
4.5	12.2											
5.0	12.2	12.2										
6.0	12.2	11.5										
7.0	12.2	10.8		10.1								
8.0	12.2	10.2	7.4	10.1								
9.0	12.1	9.7	7.1	10.1								
10.0	11.3	9.0	6.7	10.1	9.0							
11.0	10.5	8.5	6.4	8.7	8.6		4.9					
12.0	9.6	8.0	6.2	7.6	8.3		4.9			4.4		
14.0	8.1	7.1	5.8	5.8	6.7	6.7	4.9			4.4		
16.0	6.7	6.5		4.5	5.2	5.9	4.1	4.8		3.9	4.4	
18.0				3.4	4.1	4.7	3.2	3.8	4.4	3.0	3.7	
20.0				2.6	3.2	3.7	2.4	3.0	3.5	2.3	2.8	3.4
22.0				2.0	2.5	2.9	1.8	2.3	2.8	1.7	2.2	2.6
24.0				1.4	1.8	2.2	1.3	1.7	2.1	1.2	1.6	2.0
26.0				0.9	1.3	1.6	0.8	1.3	1.6	0.7	1.2	1.5
28.0				0.5	0.8	1.0		0.8	1.1		0.7	1.1
30.0						0.6			0.7			0.7

m	11.1 m + 18.0 m			33.2 m + 18.0 m			47.9 m + 18.0 m			51.2 m + 18.0 m		
	0°	20°	40°	0°	20°	40°	0°	20°	40°	0°	20°	40°
3.5	5.8											
4.0	5.8											
4.5	5.8											
5.0	5.8											
6.0	5.8											
7.0	5.8											
8.0	5.8			4.2								
9.0	5.8			4.2								
10.0	5.8	5.3		4.2								
11.0	5.8	5.0		4.2								
12.0	5.7	4.8		4.2								
14.0	5.1	4.4		4.2			2.9					
16.0	4.7	4.1	3.2	4.2	4.2		2.9			2.7		
18.0	4.2	3.7	3.0	3.9	4.1		2.9			2.7		
20.0	3.7	3.4	2.8	3.1	3.9	3.2	2.6	2.9		2.7		
22.0	3.3	3.1	2.6	2.4	3.3	3.1	2.0	2.9		2.4		
24.0	3.0	2.9	2.5	1.9	2.7	3.0	1.5	2.3		1.8	2.7	
26.0	2.7	2.8		1.4	2.1	2.7	1.0	1.8	2.5	1.3	2.2	
28.0				1.0	1.6	2.2	0.7	1.4	2.0	0.9	1.7	2.3
30.0				0.7	1.2	1.7		1.0	1.5		1.2	1.8
32.0					0.9	1.3		0.6	1.1		0.9	1.4
34.0					0.5	0.9			0.8			1.0
36.0						0.5						0.7