

EC520AJ Gen.2

ELECTRIC ARTICULATING

BOOM LIFT



STANDARD SPECIFICATIONS

Performance

Working Height	18.0 m
Platform Height	16.0 m
Horizontal Outreach	10.00 m
Working Outreach **	10.65 m
Up and Over Height	7.30 m
Swing Non-Continuous	355°
Platform Capacity - Unrestricted	250 kg
Platform Rotator (Hydraulic)	180°
Jib - Overall Length	1.24 m
Jib - Range of articulation	145° (+76° / -69°)
Machine weight *	7760 kg
Maximum Ground Bearing Pressure ***	6.6 kg/cm²
Occupied floor area	7.5 m²
Drive Speed	5 km/h
Gradeability- 2WD	30%
Turning Radius - Inside	2.06 m
Turning Radius - Outside	4.78 m

* Certain options or country standards may increase weight and/or dimensions.

** Incl. 0.65 m outreach beyond platform

*** With Standard tires

KEY SPECS

Working Height

18.00 m

Platform Capacity

250 kg

Horizontal Outreach

10.00 m

Drive Speed

5 km/h

KEY FEATURES

- Electric motor and battery technology for zero emissions and low noise
- Conquer rough terrain with standard oscillating axle delivering optimized grip and stability
- Save time thanks to very fast charging (~3.5 hrs- depends on battery stack size)
- Reduce maintenance with Dura Tough gull-wing turntable hood and chassis embedded lithium batteries for optimal component protection
- Zero emissions allowing you to work in low emission zones- indoor and outdoor

Power Source

Control System	12V-DC
Power System	48V-DC
Batteries	10KW/200Ah Lithium-Ion Batteries including BMS and integrated heaters
Drive Motors	2 x AC Motors (4 AC motors with 4WD Option)

Tires

Non Marking	FF 315/55 D20
-------------	---------------

Hydraulic System

Hydraulic Reservoir Pump	30 L
--------------------------	------

ACCESSORIES & OPTIONS

- Lithium Battery extension up to 20KW/400Ah total
- 4 Wheel Drive System
- 0.76 m x 1.22 m Slide bar side entry platform
- 0.76 m x 1.52 m Self closing inward swing gate
- 13 mm air line to platform
- Platform Tool Tray
- Platform charger 12V
- Platform charger USB
- Biodegradable Hydraulic Oil
- Arctic Hydraulic Oil
- Flashing Amber Beacon
- Platform Worklights
- Head & Tail Lights
- Skyguard beacon (ILOS)
- All motion alarm (white noise)
- Euro Plug & Socket
- Special paint colour
- Foam filled 315/55 D20 Tyres
- 33 x 12-20 Low profile, Solid Non Marking Tyres
- ClearSky CAN Telematics System
- Hydraulic Oil Heater
- Hot weather package
- Hostile Environment Kit **
- Ambient Light for Platform and Ground Controls (coming soon)
- SkyEye
- SkyBar

STANDARD FEATURES

- Multiple function operation through Load Sensing System
- Full proportional drive joystick control with integral thumb steer switch
- Full proportional main boom and swing joystick control
- Selectable creep speed on drive / lift and swing functions
- Platform console machine status light panel *
- AC power cable to platform
- 5 Degree Tilt Alarm/Indicator Light
- Dura Tough gull-wing turntable hood
- 12V-DC Auxiliary Power
- Hourmeter
- Interactive 4" LCD Display at Ground Controls
- Control ADE® (Advanced Design Electronics) System
- 2 wheel independent direct electric AC drive
- Horn
- Lifting/Tie Down Lugs
- Oscillating Front Axle
- Cast Aluminum Control Box
- Motion Alarm
- 355 Degree Non-Continuous Swing
- 3kW Zivan battery charger
- Ground control selector switch with key lock
- 48V DC pump motor
- SkyLine

* Provides indicator lights at platform control console for system distress, battery state of charge, 5 degree tilt light, and foot switch status.

** Includes boom wipers, cylinder bellows and console cover.

EC520AJ Gen.2

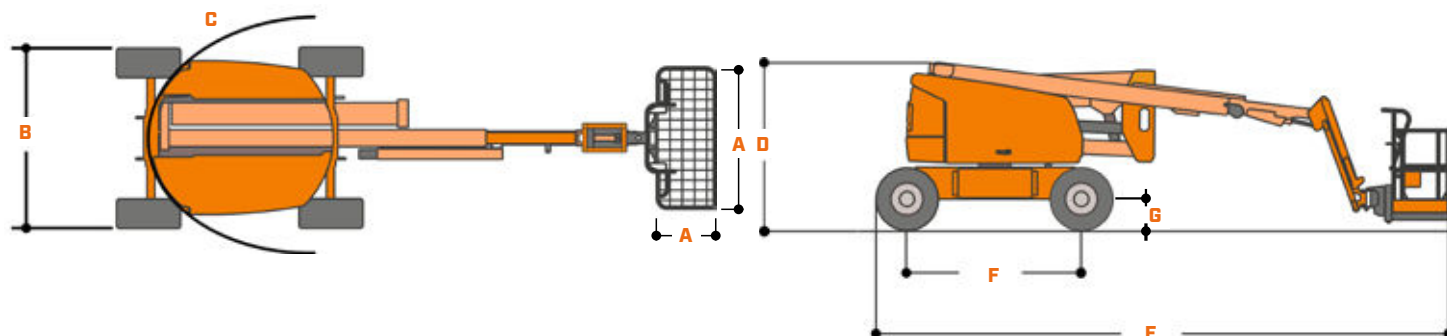
ELECTRIC ARTICULATING

BOOM LIFT



DIMENSIONS

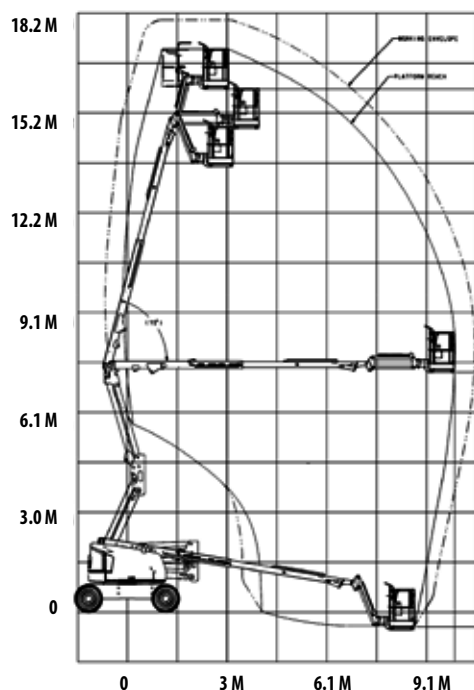
All dimensions are approximate



A. Platform Size	0.76 m x 1.83 m
B. Overall Width	2.26 m
C. Tailswing (working condition)	Zero

D. Stowed Height	2.27 m
E. Stowed Length	7.77 m
F. Wheelbase	2.36 m
G. Ground Clearance	0.42 m

REACH DIAGRAM



IMPORTANT

JLG is continually researching and developing products and reserves the right to make modifications without prior notice. All data in this document is indicative. Certain options or country standards will increase weight. Specifications may change to meet country standards or with the addition of optional equipment.

Due to continuous product improvements, JLG Industries reserves the right to make specification and/or equipment changes without prior notification.



JLG EMEA BV
Polaris Avenue 63
2132 JH Hoofddorp
The Netherlands
Tel.: +31 (0)23 565 5665
www.jlg.com

An Oshkosh Corporation Company