

# Self-Propelled Articulating Booms

Z™ -60/37DC & Z™ -60/37FE

## Specifications

MODEL	Z-60/37DC & Z-60/37FE	
Measurements	US	Metric
Working height maximum*	65 ft 7 in	20.16 m
Platform height maximum	59 ft 7 in	18.16 m
Horizontal reach maximum	36 ft 7 in	11.15 m
Up and over clearance maximum	24 ft 3 in	7.39 m
<b>A</b> Platform length - 8 ft / 6 ft model	3 ft / 2 ft 6 in	0.91 m / 0.76 m
<b>B</b> Platform width - 8 ft / 6 ft model	8 ft / 6 ft	2.44 m / 1.83 m
<b>C</b> Height - stowed	8 ft 4 in	2.54 m
Transport Height - stowed (jib tucked under)	8 ft 7 in	2.62 m
<b>D</b> Length - stowed	26 ft 9 in	8.15 m
Transport Length-Stowed (jib tucked under)	20 ft 8 in	6.3 m
<b>E</b> Width	8 ft 2 in	2.49 m
<b>F</b> Wheelbase	8 ft 2 in	2.49 m
<b>G</b> Ground clearance - center	1 ft 1 in	0.33 m

### Productivity

Lift capacity	500 lbs	227 kg
Platform rotation	160°	
Vertical jib rotation	135°	
Turntable rotation	355° non-continuous	
Turntable tailswing - riser up	1 ft 11 in	0.58 m
Turntable tailswing - riser down	2 ft 8 in	0.81 m
Drive speed - stowed	4.0 mph	6.44 km/h
Drive speed - raised**	0.68 mph	1.09 km/h
Gradeability - 4WD - stowed***	45%	45%
Turning radius - inside	8 ft 3 in	2.51 m
Turning radius - outside	18 ft 8 in	5.69 m
Controls	24V DC proportional	
Tires	355/55D625, 14 Ply	

### Power

Drive system	34 V 3-Phase AC	
Power source	48 V DC (eight 6V batteries)	
	390 Ah capacity (FLA standard on DC)	
	415 Ah capacity (AGM standard on FE)	
	24.8 HP (18.5kW) Kubota diesel T4f D1105 driven AC generator (FE only)	
Auxiliary power unit	12 V DC	
Hydraulic tank capacity	18 gal	68.14 L
Fuel tank capacity	17 gal	64.35 L

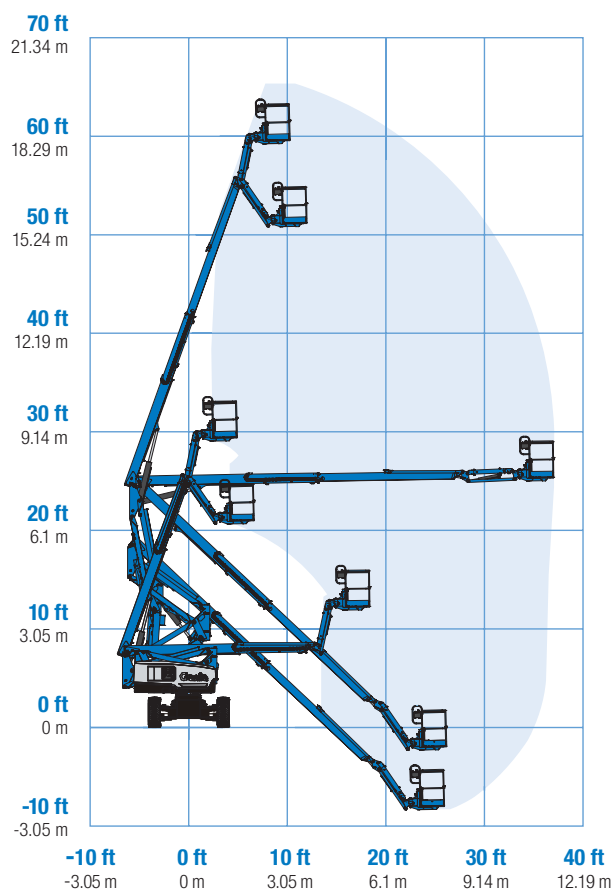
### Weight\*\*\*\*

Z-60/37DC	16,600 lbs	7,530 kg
Z-60/37FE	17,100 lbs	7,756 kg

### Standards Compliance

ANSI A92.5, CSA B354.4, EN 280, AS 1418.10

### Range Of Motion Z-60/37DC & Z-60/37FE

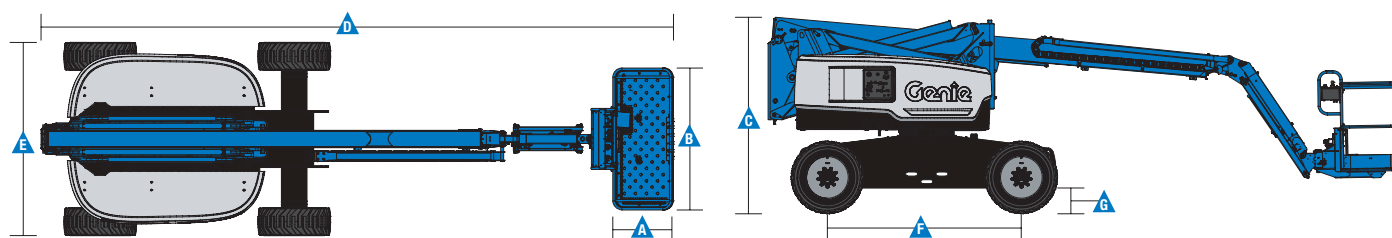


\* The metric equivalent of working height adds 2 m to platform height. U.S. adds 6 ft to platform height.

\*\* In lift mode (platform raised), the machine is designed to operate on firm, level surfaces only.

\*\*\* Gradeability applies to driving on slopes. See operators manual for details regarding slope ratings.

\*\*\*\* Weight will vary depending on options and/or country standards.



# Self-Propelled Articulating Booms

Z™ -60/37DC & Z™ -60/37FE

## Features

Standard Features	Easily Configured To Meet Your Needs	Options & Accessories
<p><b>Measurements</b></p> <ul style="list-style-type: none"> <li>• 65 ft 7 in (20.16 m) working height</li> <li>• 36 ft 7 in (11.15 m) horizontal reach</li> <li>• 24 ft 3 in (7.39 m) up and over clearance</li> <li>• Up to 500 lbs (227 kg) lift capacity</li> </ul> <p><b>Productivity</b></p> <ul style="list-style-type: none"> <li>• 5 ft (1.52 m) jib boom with 135° working range</li> <li>• Digital hour meter with battery charge indicator and diagnostic readout</li> <li>• 4Wheel AC electric drive system</li> <li>• Variable speed high efficiency hydraulic power unit</li> <li>• Self-leveling platform</li> <li>• Hydraulic platform rotation</li> <li>• Proportional joystick controls</li> <li>• Drive enable</li> <li>• AC power cord to platform</li> <li>• Horn</li> <li>• Hour meter</li> <li>• Tilt alarm</li> <li>• Descent, motion and travel alarm</li> <li>• 355° non-continuous turntable rotation</li> <li>• Locking turntable covers</li> <li>• Electronic traction control</li> <li>• Telematics ready connector</li> <li>• Entry toeboard</li> <li>• Lift Guard™ Contact Alarm</li> </ul> <p><b>Power</b></p> <ul style="list-style-type: none"> <li>• 48 V DC battery pack (390Ah FLA standard on DC)</li> <li>• 48 V DC battery pack (415Ah AGM standard on FE)</li> <li>• 12 V DC auxiliary power</li> <li>• 25A temperature compensated smart charge system</li> <li>• Battery charge indicator</li> <li>• Low battery voltage interrupt</li> </ul>	<p><b>Platform Options</b></p> <ul style="list-style-type: none"> <li>• Steel 6ft (1.83m) dual entry with side swing gate (standard)</li> <li>• Steel 8ft (2.44m) tri entry with side swing gate</li> </ul> <p><b>Jib</b></p> <ul style="list-style-type: none"> <li>• 5 ft (1.52 m) jib boom</li> </ul> <p><b>Engine Option</b></p> <ul style="list-style-type: none"> <li>• 24.8 HP (18.5 kW) Kubota diesel T4f</li> </ul> <p><b>Drive Option</b></p> <ul style="list-style-type: none"> <li>• 4WD Electric AC (standard)</li> </ul> <p><b>Axle Option</b></p> <ul style="list-style-type: none"> <li>• Active oscillation (standard on 4WD)</li> </ul> <p><b>Tire Options</b></p> <ul style="list-style-type: none"> <li>• Rough terrain foam-filled (standard on FE)</li> <li>• Rough terrain non-marking foam filled (standard on DC)</li> </ul>	<p><b>Productivity Options</b></p> <ul style="list-style-type: none"> <li>• Half mesh platform inserts</li> <li>• Platform top auxiliary rail</li> <li>• Air line to platform</li> <li>• Specialty hydraulic oil (cold weather, fire resistant, or biodegradable)</li> <li>• Hostile environment kit</li> <li>• Aircraft protection package (6ft platform only)</li> <li>• Thumb rocker steer</li> <li>• Tool tray</li> <li>• Pipe cradle (pair)*</li> <li>• Alarm package</li> <li>• Panel cradle package</li> <li>• Lockable platform control box covers</li> <li>• Tow package</li> <li>• Work and drive light package</li> <li>• Operator Protective Structure*</li> <li>• Flashing beacon</li> <li>• Fall Arrest Bar</li> </ul> <p><b>Power Options</b></p> <ul style="list-style-type: none"> <li>• 2000 watt 120VAC pure sine wave power inverter</li> <li>• Cold Start Package</li> </ul>



\* Available aftermarket only

### Genie United States

6464 185th Ave. NE  
Redmond, WA 98052  
Telephone +1 (425) 881-1800  
Toll Free in USA/Canada +1 (800)-536-1800  
Fax +1 (425) 883-3475

### Distributed By:

Effective Date: January, 2017. Product specifications and prices are subject to change without notice or obligation. The photographs and/or drawings in this document are for illustrative purposes only. Refer to the appropriate Operator's Manual for instructions on the proper use of this equipment. Failure to follow the appropriate Operator's Manual when using our equipment or to otherwise act irresponsibly may result in serious injury or death. The only warranty applicable to our equipment is the standard written warranty applicable to the particular product and sale and we make no other warranty, express or implied. Products and services listed may be trademarks, service marks or trade names of Terex Corporation and/or their subsidiaries in the USA and many other countries. Terex, Genie and AWP are registered trademarks of Terex Corporation or its subsidiaries. © 2017 Terex Corporation.